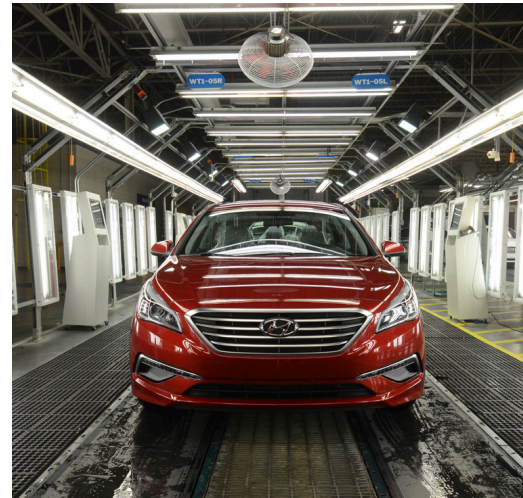


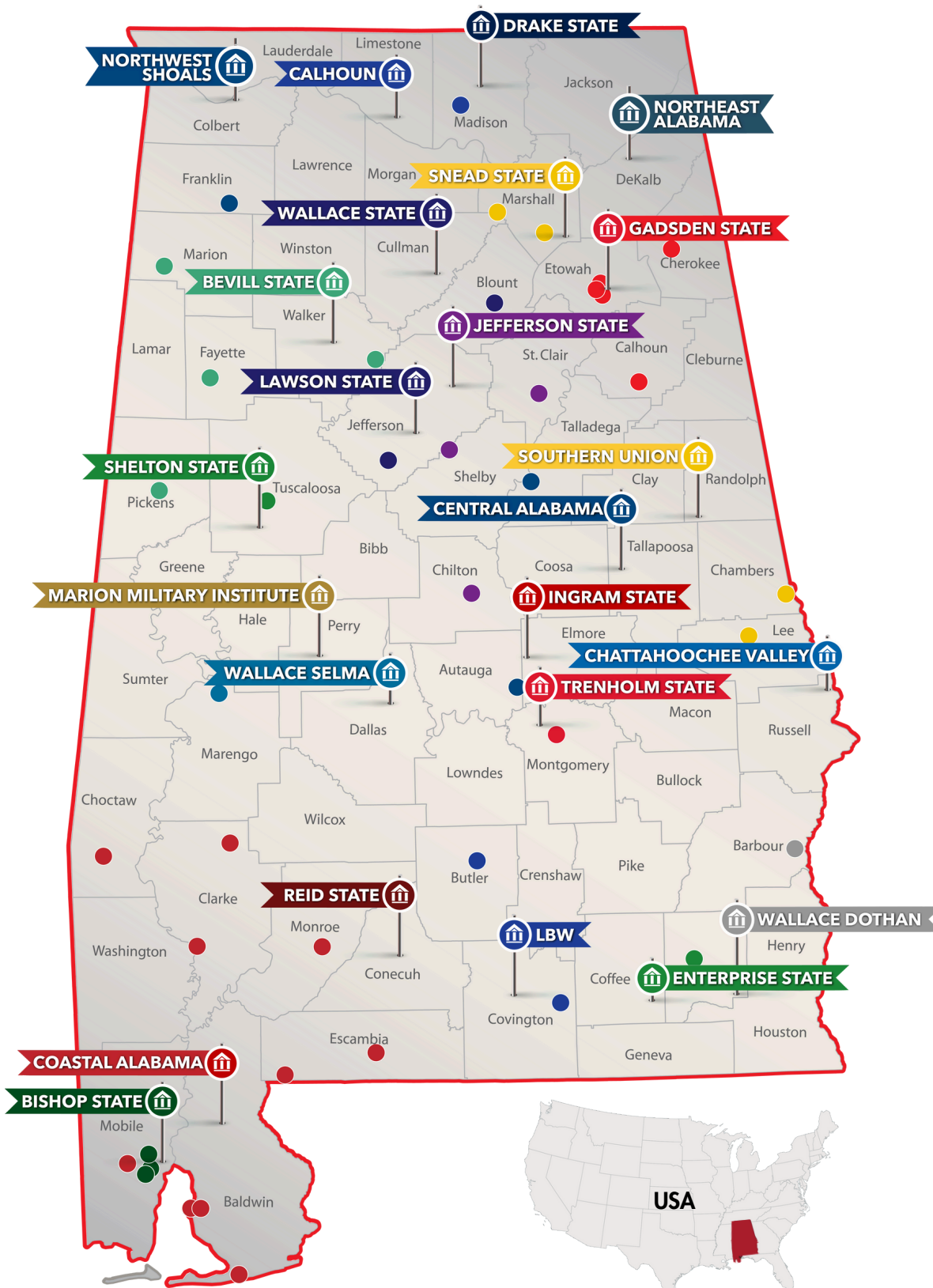
THE ENGINE FOR PRODUCING AUTOMOTIVE TALENT IN ALABAMA



For more information, visit economicdevelopment.accs.edu



The Alabama Community College System is ideally situated to cultivate talent across diverse industry sectors. By utilizing a variety of enrollment options—including dual enrollment, non-credit courses, short certificates, associate degrees, apprenticeships, and other work-based learning models —community colleges are aligning talent development with the demands of industry.



24 Colleges



130 Locations



182,000+
Individuals Served



400+ Degree &
Certificate Programs
*Credit & Non-Credit



20% Increase in
Enrollment since
AY2022



500+
Workbased Learning
Company Partners

Automotive Manufacturing Programs

- Additive Manufacturing
- Composites
- Electronics
- Electrician
- Engineer Technician
- HVAC/R
- Industrial Maintenance Technician
- Machine Tool Technology
- Mechanical Design Engineer
- Mechatronics & Robotics
- Production Operator
- Welding



Industry-Recognized Credentials

Upon fulfilling course requirements, students may become eligible to obtain industry-recognized credentials that align with their chosen career pathway.

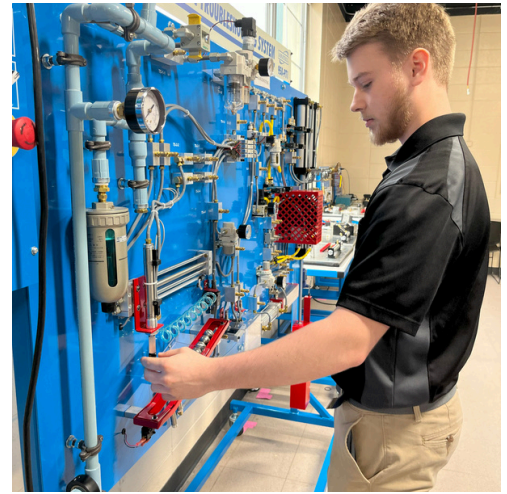
- American Welding Society (AWS)
- Automotive Service Excellence (ASE)
- Electronics Technicians Association (ETA)
- Manufacturing Skills Standards Council (MSSC)
- National Center for Construction Education and Research (NCCER)
- National Coalition of Certification Centers (NC3)
- National Institute of Metalworking Skills (NIMS)



Eleven community colleges have active Federation for Advanced Manufacturing Education (FAME) chapters, which combine best-in-class technical training in electricity, robotics, fluid power, mechanics, PLCs, industrial troubleshooting, and lean manufacturing principles with intentional hands-on experience at host companies for an immersive training experience.



The Alabama Training Network serves as the state's Manufacturing Extension Partnership by providing extensive workforce training, technical assistance, and engineering services in areas such as continuous improvement, environmental health and safety, food industry, industrial maintenance and technology, and leadership and management development.



Industry Collaborations

"At the Honda Alabama Auto Plant, work-based learning provides our associates with the necessary skills to excel in our modern manufacturing environment. There is no faster way to learn how technology that is taught in the classroom can be used in real-world applications than to work in the field while pursuing your education. This is exemplified through our involvement in FAME and partnership with Gadsden State Community College."
Scott Haywood, Technical Specialist and Staff Engineer

HONDA

"Mercedes Benz US International (MBUSI) is always looking to the future. From training and mentoring our Youth while still in high school to become our future Workforce, to on-the-job training for current Team Members, and even providing a path to obtain an Associates Degree for Maintenance Technicians and Automotive Repair Technicians. Work-based learning is at the core of our Organizational Development team and ACCS is a strategic partner in those initiatives. The Mercedes-Benz automobile of the future will be different; greener, more efficient, safe and even more fascinating. Only one thing will never change —it will wear a star."
Brandy Snipes, Technical Program Management Specialist



Mercedes-Benz

"At Toyota, we always look for ways to improve, challenge and collaborate. In the rapidly evolving automotive industry, the key to our success is our team members. The Advanced Manufacturing Technician program is an award-winning program that combines cutting-edge curriculum, paid working experience, and the best practices of a world-class manufacturer. Toyota Alabama is grateful for our partnership with the Alabama Community College System, Calhoun Community College and J.F. Drake State Community and Technical College, who maintain a disciplined learning environment for a steady pipeline of well-trained and multi-skilled maintenance technicians."
Jason Puckett, President

TOYOTA | AL

Front cover photo credits clockwise: Honda, Hyundai, Mercedes, Toyota, Mercedes.

For more information, scan the QR code or visit economicdevelopment.accs.edu

Melody Whitten

Chief Economic Development Officer
(c) 256.558.4747
melody.whitten@accs.edu

Madison Hadley

Economic Development Analyst
(c) 334.546.2326
madison.hadley@accs.edu

Barry May

Chief Workforce Development Officer
(o) 334.293.4707
barry.may@accs.edu

Audrey Webb

Director of Workbased Learning
(c) 205.567.4900
audrey.webb@accs.edu

