

THE ENGINE FOR PRODUCING AUTOMOTIVE TALENT IN ALABAMA



For more information, visit economicdevelopment.accs.edu

Automotive Manufacturing Programs

- Additive Manufacturing
- Composites
- Electronics
- Electrician
- Engineer Technician
- HVAC/R
- Industrial Maintenance Technician
- Machine Tool Technology
- Mechanical Design Engineer
- Mechatronics & Robotics
- Production Operator
- Welding



Industry-Recognized Credentials

Upon fulfilling course requirements, students may be eligible to obtain industry-recognized credentials that align to their career pathway.

- American Welding Society (AWS)
- Automotive Service Excellence (ASE)
- Electronics Technicians Association (ETA)
- Manufacturing Skills Standards Council (MSSC)
- National Center for Construction Education and Research (NCCER)
- National Coalition of Certification Centers (NC3)
- National Institute of Metalworking Skills (NIMS)



SUPPLEMENTAL PROGRAMS



FAME chapters deliver advanced manufacturing training integrated with paid, hands-on experience at host companies



Expands registered apprenticeships and work-based learning to support employers, workers, and economic growth.



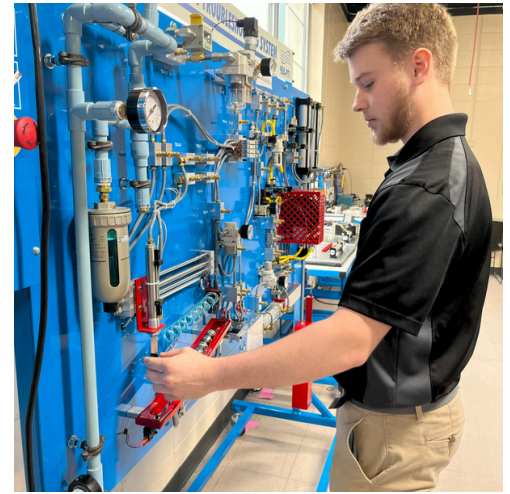
Provides workforce training, technical assistance, and engineering services supporting industrial operations and continuous improvement.



Rapid, industry-designed, non-credit training via online theory and hands-on labs at community colleges and high schools throughout the State.



Through industry partnerships and collaboration with the Alabama Mobility and Power (AMP) Center at UA, ACCS is powering workforce readiness for the growing battery and energy storage sector by aligning training with industry needs.



Industry Collaborations

"At the Honda Alabama Auto Plant, work-based learning provides our associates with the necessary skills to excel in our modern manufacturing environment. There is no faster way to learn how technology that is taught in the classroom can be used in real-world applications than to work in the field while pursuing your education. This is exemplified through our involvement in FAME and partnership with Gadsden State Community College."

Scott Haywood, Technical Specialist and Staff Engineer

HONDA

"Mercedes-Benz U.S. International (MBUSI) is always looking to the future. From training and mentoring our Youth while still in high school to become our future Workforce, to on-the-job training for current Team Members, and even providing a path to obtain an Associate's Degree for Maintenance Technicians. Work-based learning is at the core of our Workforce Development team, and ACCS is a strategic partner in those initiatives. Our Industrial Electronics students receive the highest standard of classroom and lab instruction at Shelton State Community College through their Technical Services Department, so MBUSI is able to sustain a pool of skilled Industrial Maintenance Technicians. Having a strong partnership with Shelton State Community College allows us to work together in a world of ever-evolving technology. The Mercedes-Benz automobile of the future will be different; greener, more efficient, safe and even more fascinating. Only one thing will never change — it will wear a star."

Brandy Snipes, Technical Program Management Specialist



Mercedes-Benz

"At Toyota, we always look for ways to improve, challenge and collaborate. In the rapidly evolving automotive industry, the key to our success is our team members. The Advanced Manufacturing Technician program is an award-winning program that combines cutting-edge curriculum, paid working experience, and the best practices of a world-class manufacturer. Toyota Alabama is grateful for our partnership with the Alabama Community College System, Calhoun Community College and J.F. Drake State Community and Technical College, who maintain a disciplined learning environment for a steady pipeline of well-trained and multi-skilled maintenance technicians."

Jason Puckett, President

TOYOTA | AL

Front cover photo credits clockwise: Honda, Hyundai, Mercedes, Toyota, Mercedes.

For more information, scan the QR code or visit economicdevelopment.accs.edu

Melody Whitten

Chief Economic Development Officer
(c) 256.558.4747
melody.whitten@accs.edu

Madison Hadley

Economic Development Analyst
(c) 334.546.2326
madison.hadley@accs.edu

Barry May

Vice Chancellor of Workforce Operations
(o) 334.293.4707
barry.may@accs.edu

Audrey Webb

Director of Workbased Learning
(c) 205.567.4900
audrey.webb@accs.edu

