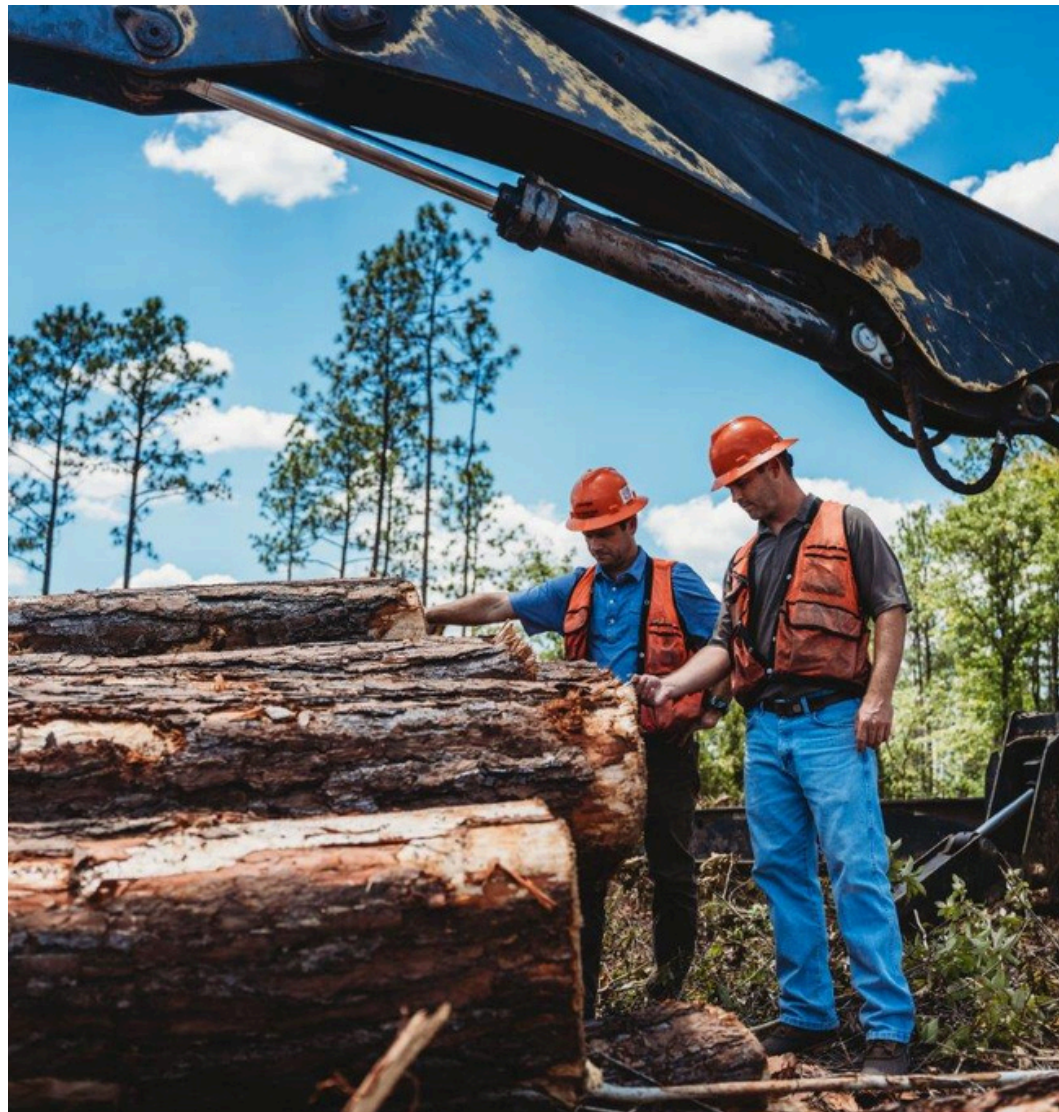
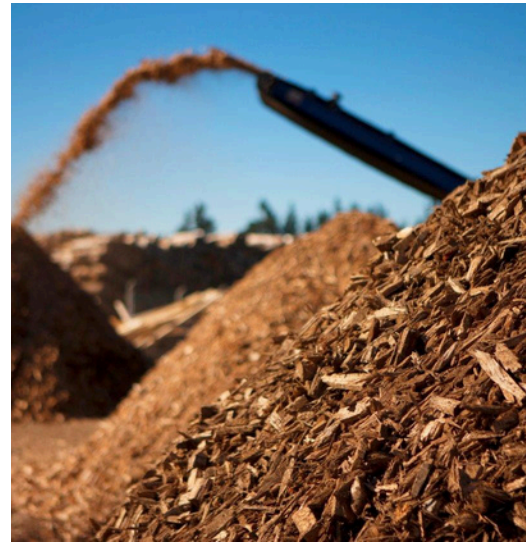


WHERE TIMBER MEETS TALENT FOR ALABAMA'S FORESTRY WORKFORCE



For more information, visit economicdevelopment.accs.edu



The Alabama Community College System is ideally situated to cultivate talent across diverse industry sectors. By utilizing a variety of enrollment options including dual enrollment, non-credit courses, short certificates, associate degrees, apprenticeships, and other work-based learning models —community colleges are aligning talent development with the demands of industry.

associate degrees, apprenticeships, and other work-based learning models —community colleges are aligning talent development with the demands of industry.



24
Colleges



182,000+
Individuals
Served In
AY2025



130
Locations

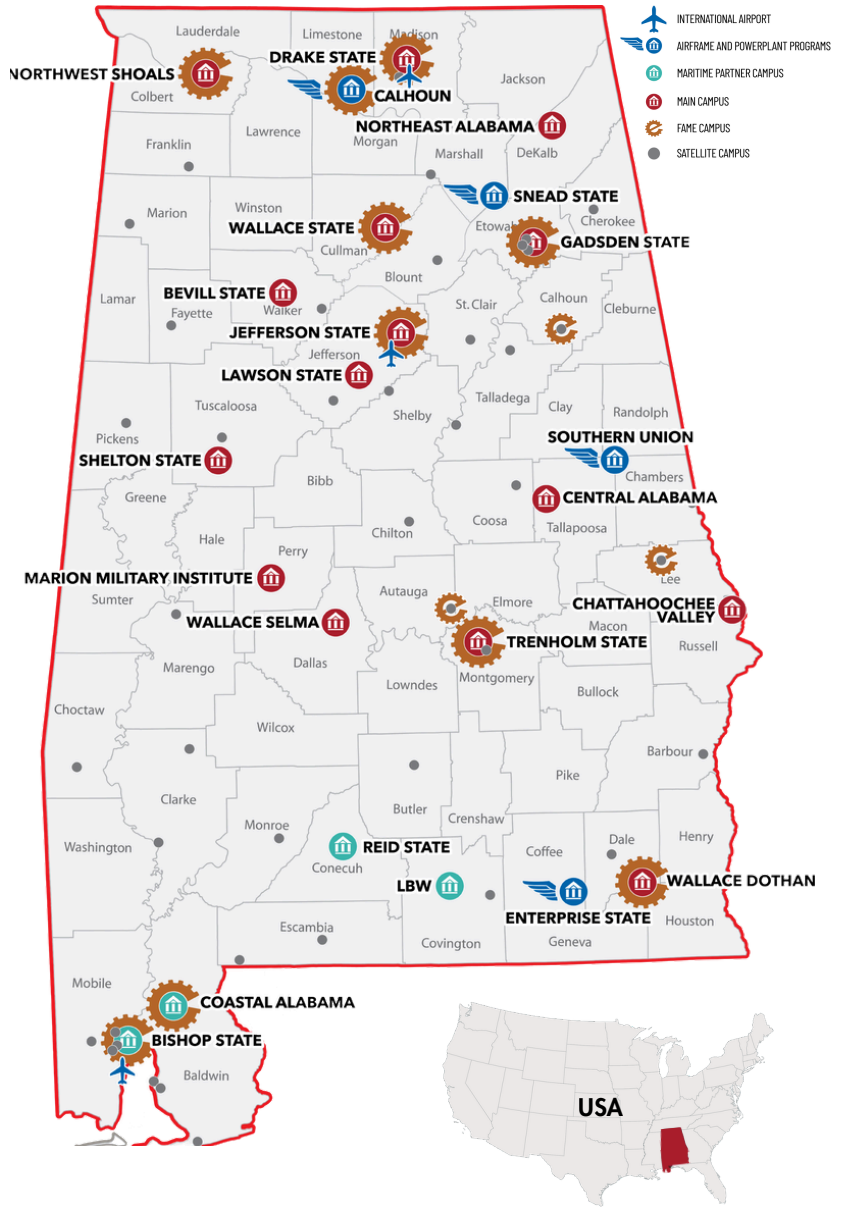


400+ Degree
& Certificate
Programs
*Credit & Non-Credit



600+
Work-based
Learning
Company
Partners

20% Increase in
For-credit Enrollment
Since AY2022



Cultivating the Future of Forestry in Alabama

The **Alabama Community College System** is proud to partner with organizations across the state to strengthen and support the forestry industry. Featured here are key collaborators such as **ForestryWorks**, the **Alabama Forestry Commission**, and a number of valued industry partners. Our mission is to raise awareness of the exciting career opportunities in forestry and provide accessible, effective training programs that equip individuals for long-term success in this field.



ForestryWorks, headquartered in Alabama, is a collaborative initiative to address workforce shortages facing the forestry industry. By connecting secondary and post-secondary education with industry partners, ForestryWorks builds a pipeline of skilled professionals for careers ranging from forest management to mill operations. Efforts include a

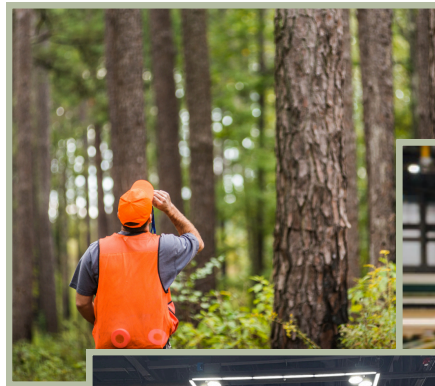
forestry focused children's book series, teacher training and high school certification programs (CRI: Forest Worker, Sawmill Worker, Logging Worker) along with promoting careers through targeted digital and social media marketing, an industry-specific job board, and recruitment programs. In addition, ForestryWorks is constructing a new Forest Operations Training Center to offer **in-woods training** such as logging equipment operator, forest road management and construction, and stream crossing construction and maintenance. For more information, visit forestryworks.com.



While ForestryWorks focuses on **K12 programming** and **in-woods training**, Alabama's Community Colleges build upon that foundation by offering a post-secondary degree program in Forestry & Wildlife Science along with training specifically focused on **forest products manufacturing**. Contained therein are applicable career pathways and supplemental programs for consideration.

Career Pathways

- Commercial Drivers License
- Drafting & Design
- Electronics
- Electrical
- Engineering Technician
- Forestry Technician
- Heavy Equipment Operator
- Industrial Maintenance Technician
- Machine Tool Technology
- Mechanical Design Engineer
- Mechatronics & Robotics
- Paper & Processing Technician
- Welding



LBW Community College offers the state's only Associate in Applied Science Degree (AAS) in Forestry and Wildlife Sciences. This program prepares students for careers as forest technicians through hands-on, outdoor-focused training in areas like timber inventory, harvest planning, cartography, and fire control. Embedded within the AAS Degree are work-based learning opportunities, the ability to earn a short-term certificate and/or preparation for the Wildland Firefighter Type II certification. lbwcc.edu



The Innovation Center is customizing the development of a **Wood Products Machine Operator** course through its Skills for Success program in an effort to address the workforce needs of Alabama's wood products industry. An industry-specific task force made up of Subject Matter Experts is guiding course development for training that will equip individuals with essential skills, from operating sawmill equipment to performing quality control and troubleshooting machinery issues. trainforalabama.com



Twelve community colleges have active Federation for Advanced Manufacturing Education (FAME) chapters, which combine best-in-class technical training in electricity, robotics, fluid power, mechanics, PLCs, industrial troubleshooting, and lean manufacturing principles with intentional hands-on experience at host companies for an immersive training experience. fame-usa.com/fame-program-locations/alabama-fame/



The Alabama Training Network serves as the state's Manufacturing Extension Partnership by providing extensive workforce training, technical assistance, and engineering services in areas such as continuous improvement, environmental health and safety, food industry, industrial maintenance and technology, and leadership and management development. atn.org

Industry Collaborations

"The Alabama Forestry Commission is proud to collaborate with the Alabama Community College System (ACCS) as a partner in expanding and strengthening workforce development initiatives within Alabama's forestry sector. From educating students about career opportunities available in forestry, to providing certification and skills training for both current and aspiring professionals, the commitment of ACCS to building a strong, sustainable workforce remains unwavering. Together, we are preparing the next generation of forestry leaders and ensuring the industry continues to thrive for years to come."

Rick Oates, State Forester, Alabama Forestry Commission



Boise Cascade®

"Boise Cascade's partnership with the Alabama Community College System (ACCS) has provided an incredibly valuable pathway for talented individuals to join our Wood Products division. With manufacturing facilities in Chapman and Thorsby, Alabama, we are proud to work with the ACCS to strengthen workforce development programs within the state. The outstanding training provided by the ACCS helps current and future associates build a career with our Company. Come grow with us!"

Angella Broesch, Vice President, Human Resources

"Canfor Southern Pine employs more than 2,000 individuals in manufacturing facilities across seven states, so the building and cultivating of strong relations with our education partners is a priority of ours. Our partnership with Bishop State Community College reflects a shared commitment to workforce development and the cultivation of future leaders. Together, we're creating meaningful pathways that connect education to industry, helping students build the skills and confidence they need to shape tomorrow's workforce."

Elizabeth Nelson, Specialist, Talent Pipeline Acquisition & Corporate HR



SMARTLAM
NORTH AMERICA

"SmartLam North America is changing our nations building practices one building at a time. This requires us to provide our team members with the necessary skills to meet our customer demands. The success of our team is driven by the support with our involvement with FAME and our partnerships with Wallace Community College and the Alabama Community College System. Their relentless support of our team members and industry, is what allows Smartlam to succeed."

Derek Ratchford, Chief Executive Officer

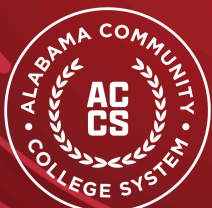
"Central Alabama Community College's dedication to supporting workforce development played a significant role in our decision to establish operations in the Lake Martin area. The fact that local students are gaining the skills we need, right near our sawmill, ensures a steady pipeline of recruits—both for our initial startup phase and long-term growth. We look forward to a lasting, mutually beneficial partnership."

Jeffrey Holley, Log Procurement Manager



Front cover photo credits: Boise Cascade, Canfor Southern Pine, Smartlam North America, Two Rivers Lumber Company

For more information, scan the QR code or visit economicdevelopment.accs.edu



Madison Hadley
Economic Development Analyst
(c) 334.546.2326
madison.hadley@accs.edu

Melody Whitten
Chief Economic Development Officer
(c) 256.558.4747
melody.whitten@accs.edu

